



Beijer Electronics - CloudVPN Introduction 2022

Rico Lim



Contents

Why the CloudVPN

What is the CloudVPN

CloudVPN Hardware Overview

How does it works?

CloudVPN Security and IT
Requirements

Getting Started



The CloudVPN An Introduction



Why CloudVPN?

Why CloudVPN



Why CloudVPN



Secure
Connectivity



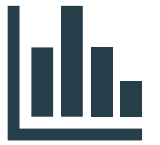
Time Saving
features



Secure
platform with
regular audits



Powerful role
based user
management
system



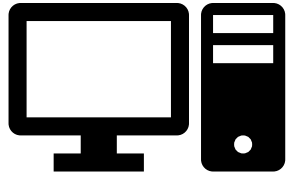
Live and
Historical
Dashboards



An aerial, high-angle view of a suspension bridge spanning a wide body of water. The bridge has multiple lanes in each direction, with several vehicles visible. The suspension cables are prominent, and the bridge deck is a light color. In the background, a city with various buildings and a harbor with ships is visible. The entire image has a blue color overlay.

What is the CloudVPN?

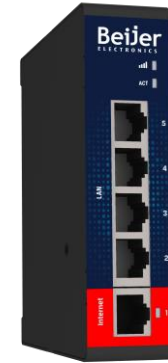
CloudVPN is a platform



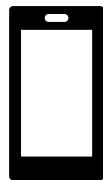
CloudVPN Client



Cloud Service



CloudVPN Router

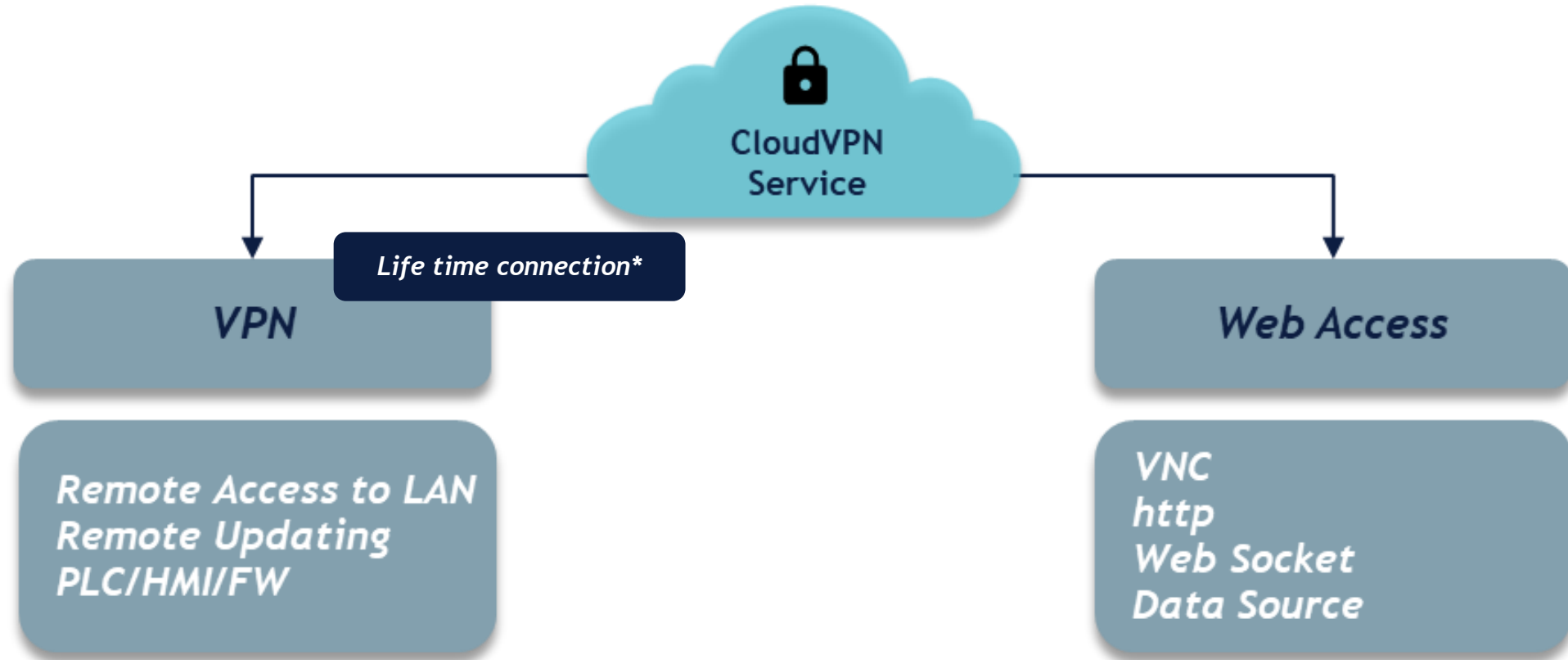


CloudVPN Mobile APP*



Browser Based Services

What does the CloudVPN offer?





CloudVPN Hardware Overview



CloudVPN Gateway hardware summary

Model Name	Part Number
CloudVPN GW Eth	600-0001
CloudVPN GW Eth + LTE	600-0002
CloudVPN GW Eth + WiFi	600-0003
CloudVPN GW Eth + LTE + WiFi	600-0004



0001

Power Connector



0002

SIM Card Slot (2FF)

LTE Antenna(Div)

LTE Antenna(Main)

Power Connector



0003

WiFi Antenna

Power Connector



0004

SIM Card Slot (2FF)




WiFi Antenna

LTE Antenna

Power Connector

CloudVPN Gateway hardware accessories

Antenna side

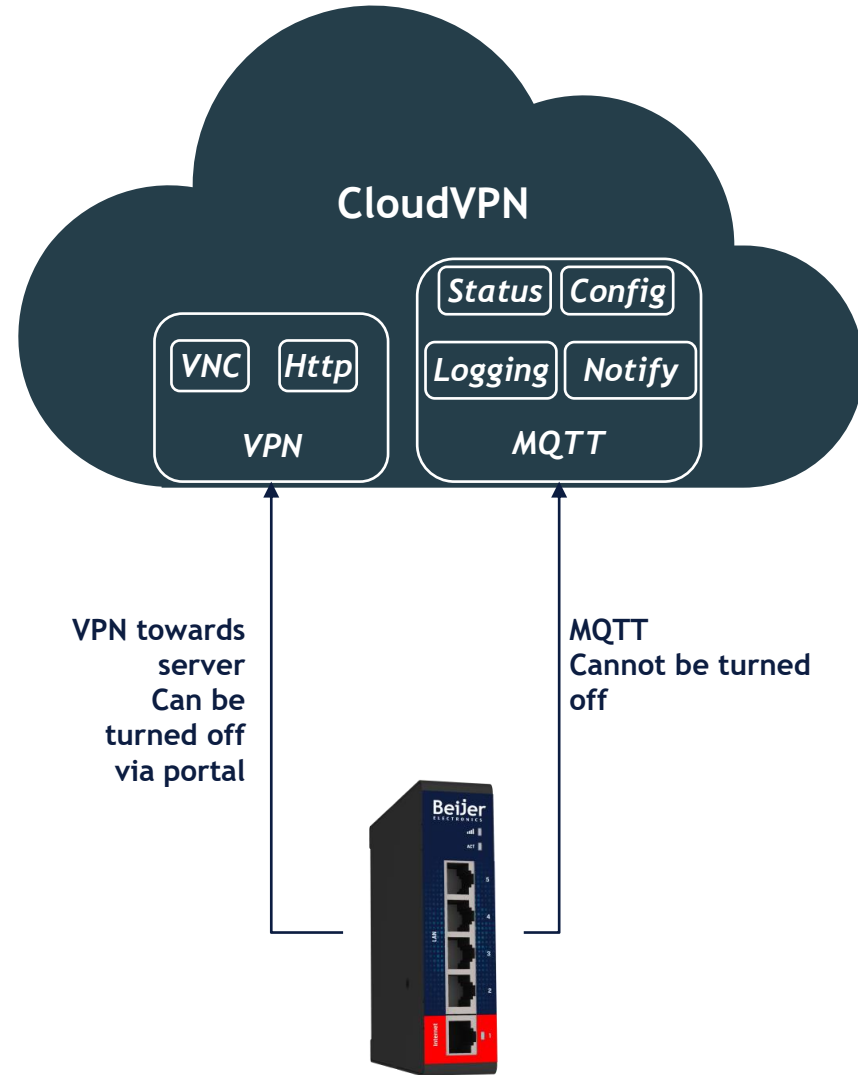
Type	Hardware / Part Number	Connector type
LTE Antenna	   601-0001 601-0002 601-0003	SMA Male/Plug
WiFi Antenna	  601-0004 601-0005	RP-SMA Male/Plug
Power Supply	 601-0005	NA

<https://cloudvpn.beijerelectronics.com/hc/en-us/articles/4406049754769-Hardware-catalog-documents>

A teal-tinted photograph of a wind farm. Several wind turbines are visible on a hillside, with more turbines and mountains in the background. The text "How does it work?" is overlaid in white in the center.

How does it work?

The CloudVPN Connections



The CloudVPN Config Process



The VPN Flow



Dashboards and Other Information





CloudVPN Security and IT Requirements

How is security maintained

Our partners have well thought out security with a scalable and intelligent server network of over 50 servers, distributed worldwide and located in ISO 27001-certified data centres. Some of the security measures we have in place to maximise our cloud security are:

- Encryption of traffic
- Patch management
- Vulnerability assessments
- Continuous server health monitoring
- Restricting server access
- Data back-ups

How is security maintained

Our complies with international industry security standards:

- ISO 9001 (quality management),
- ISO 27001 (information security),
- ISO 27017 (cloud security),
- ISO 27701 (privacy)
- IEC 62443 security level 2 (security & hardware development).

This includes recurring and rigorous third-party audits that test, verify and continuously improve our products and services to meet the latest security requirements.

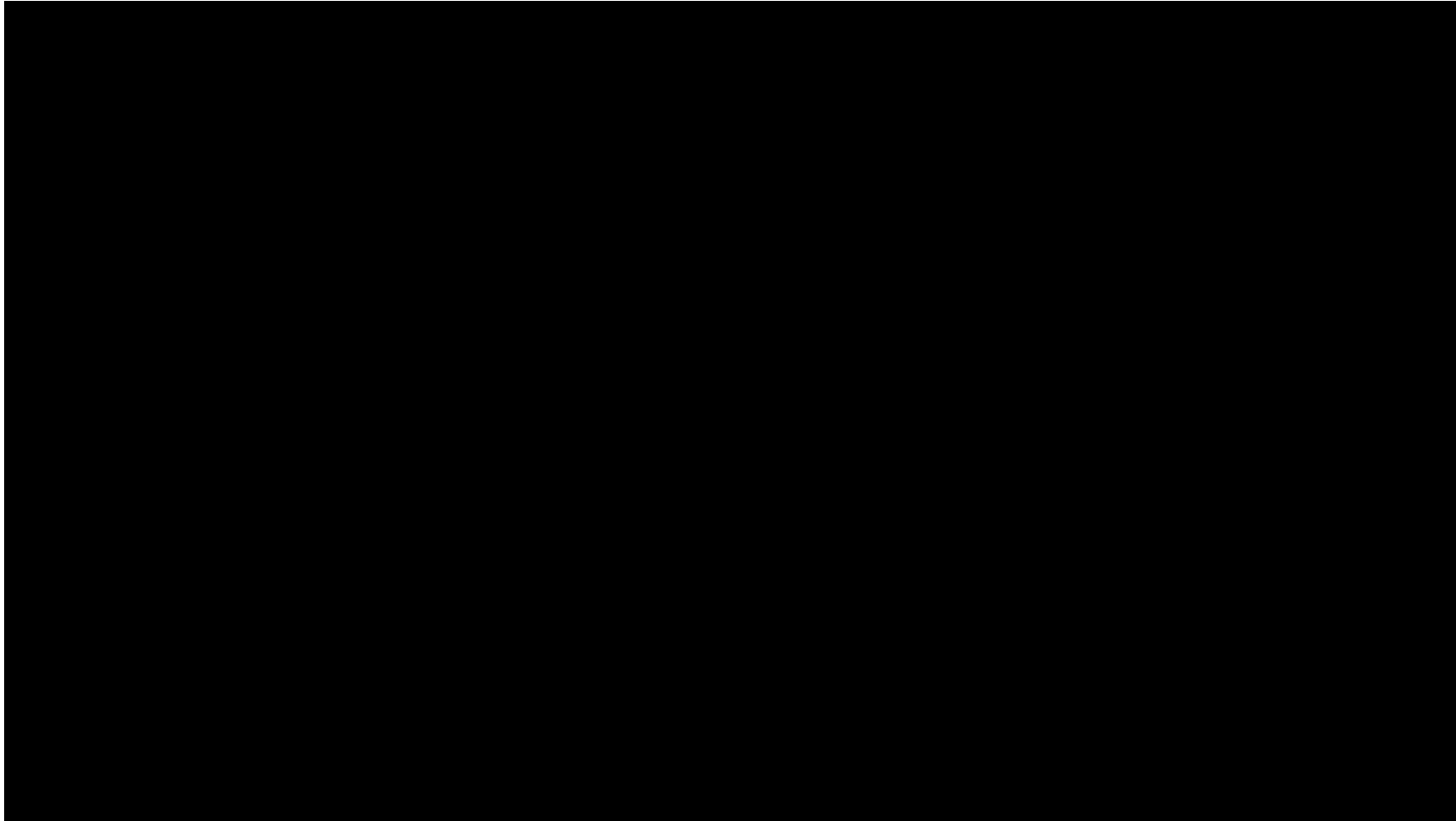


Port Requirements

Only outbound ports are required, provide this to the network administrator if required.

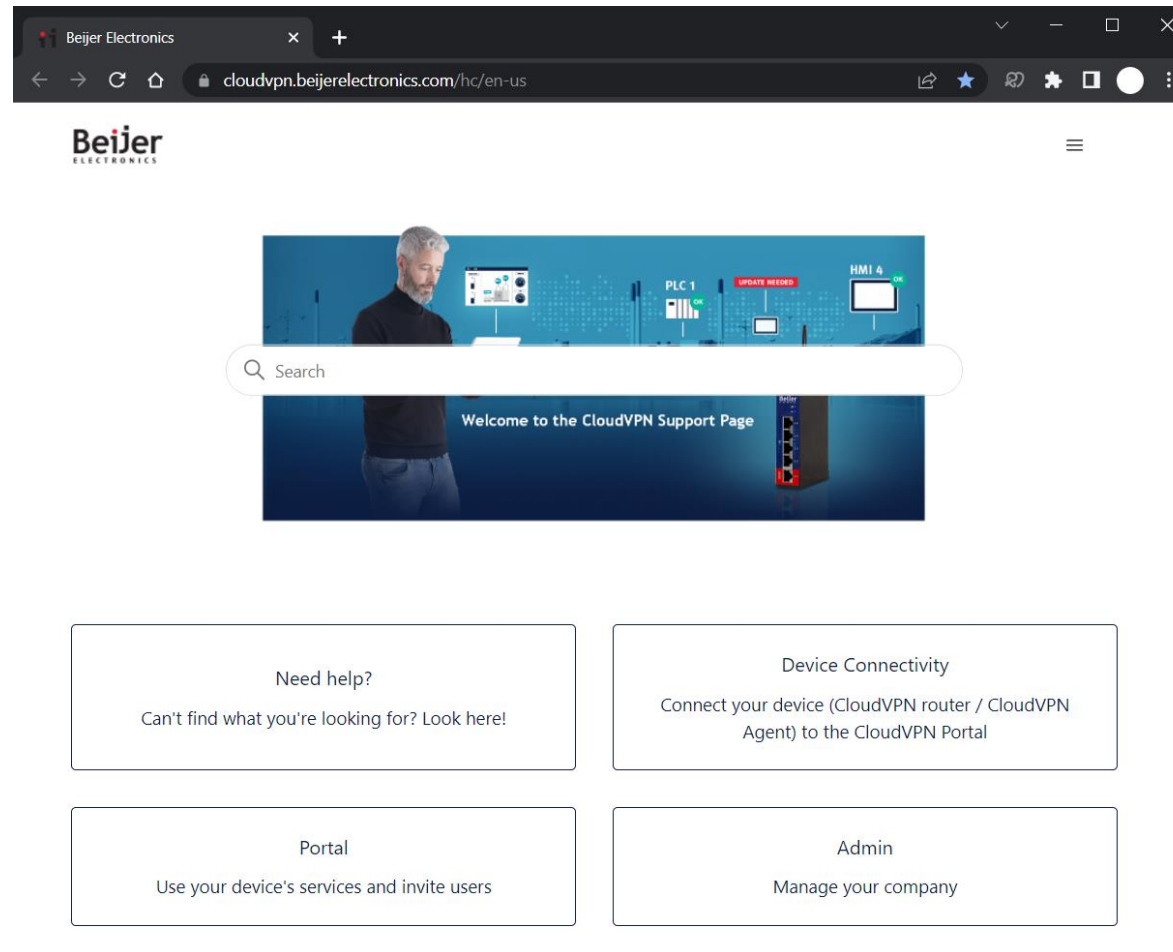
Direction	Port	Transport	Application
Outbound	443	TCP	HTTPS, MQTT (TLS), OpenVPN (1)
Outbound	1194 (2)	UDP	OpenVPN
Outbound	8443 (3)	TCP	HTTPS
Outbound	53 (4)	TCP & UDP	DNS
Outbound	123 (5)	UDP	NTP
Outbound	No Port (6)	ICMP (Echo Request)	-

Getting Started - Demo



Getting help

<https://cloudvpn.beijerelectronics.com/hc/en-us>





Summary

Why the CloudVPN

What is the CloudVPN

CloudVPN Hardware Overview

How does it works?

CloudVPN Security and IT
Requirements

Getting Started

Beijer

ELECTRONICS

People & Technology. Connected.